

1H spectrum

$$(m_{std} / M_{std}) \times (INT_{prod} / N_H) \times (M_{prod} / m_{prod}) \times P_{std} \times 100 = \% \text{ purity}$$

$$(176.15/168.19) \times (1.00/1.09) \times (114.19/112.80) \times 0.999 \times 100 = 97.2\%$$

Current Data Parameters
 NAME mf_24_kwon_QNMR
 EXPNO 1
 PROCNO 1

F2 - Acquisition Parameters
 Date_ 20240820
 Time 14.39
 INSTRUM gn500
 PROBHD 5 mm broadband
 PULPROG zg30
 TD 81728
 SOLVENT CDCl3
 NS 4
 DS 0
 SWH 8012.820 Hz
 FIDRES 0.098043 Hz
 AQ 5.0998273 sec
 RG 40.3
 DW 62.400 usec
 DE 6.00 usec
 TE 298.0 K
 D1 20.00000000 sec
 MCREST 0 sec
 MCWRK 0.01500000 sec

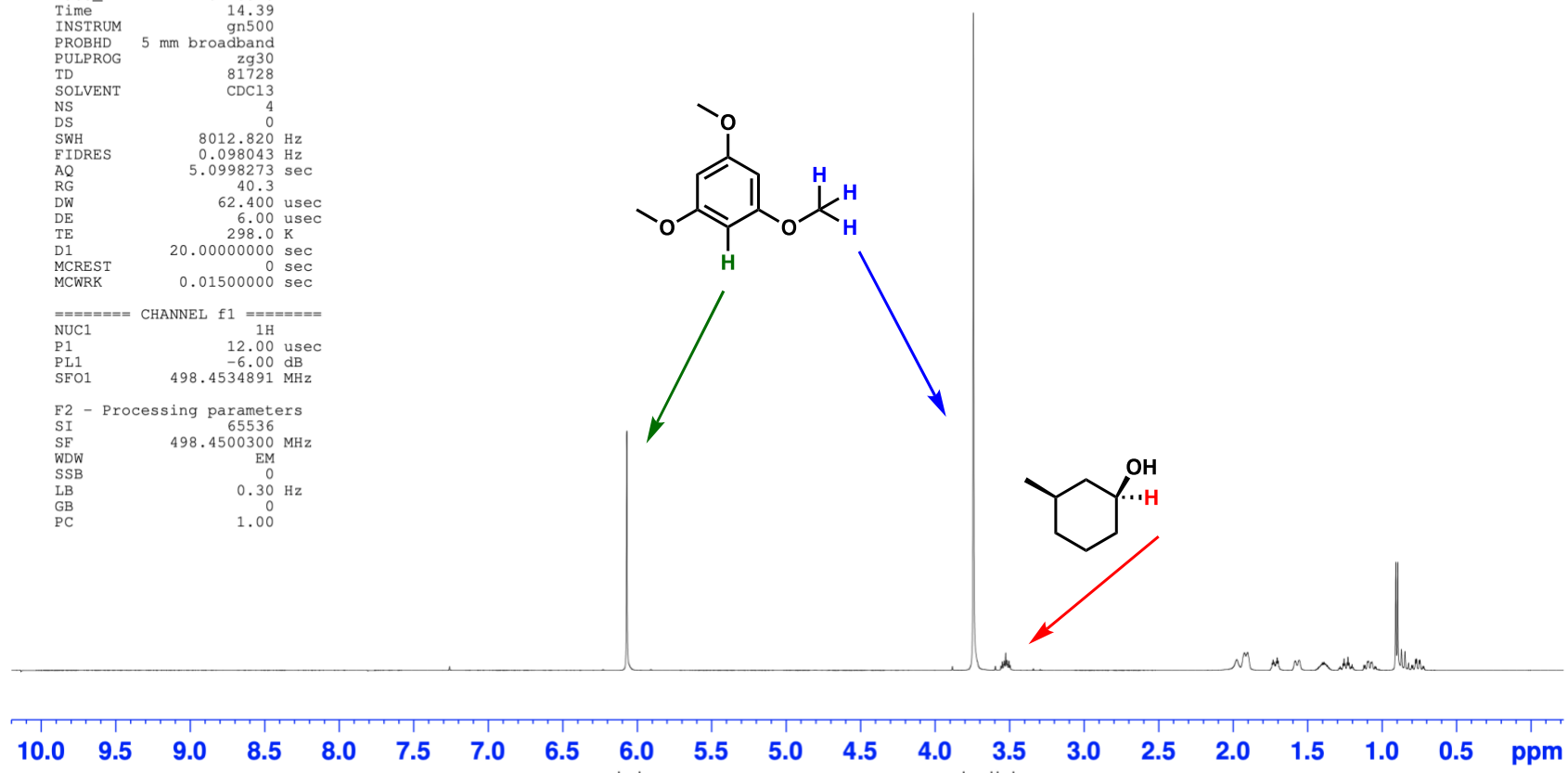
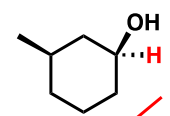
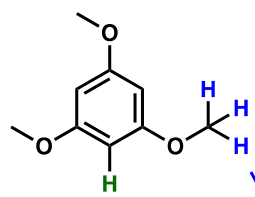
==== CHANNEL f1 =====
 NUC1 1H
 P1 12.00 usec
 PL1 -6.00 dB
 SFO1 498.4534891 MHz

F2 - Processing parameters
 SI 65536
 SF 498.4500300 MHz
 WDW EM
 SSB 0
 LB 0.30 Hz
 GB 0
 PC 1.00

7.26

6.07

3.74
3.56
3.55
3.54
3.54
3.53
3.52
3.51
3.50



3.27

9.85
1.00